

Sé pa Jaz

Piano

Tony CHASSEUR

Thierry VATON

♩ = 258 **A** Tutti 1
Fmaj7 D7(#9) Gm7 C7 Am7 D7 Gm7 C7

9 Fmaj7 D7(#9) Gm7 C7 Am7 D7 G7 C7 >

B 1. Couplet 1
17 Fmaj7 D7(#9) Gm7 C7 Am7 D7 Gm7 C7 Fmaj7 Cm7 F7

♩ = ♩³ **C**
27 Bbmaj7 Bbm7 Eb7 Am7 D7 Gm7 C7

♩ = ♩ **D** Couplet 2
33 Fmaj7 D7(#9) Gm7 C7 Am7 D7 Gm7 C7 Fmaj7 Cm7 F7

♩ = ♩³ **E**
43 Bbm7 Eb7 Bm7 E7 Amaj7 Abm7 Db7

♩ = ♩³ **F** Pont 1
49 Gb13 G13 Ab13

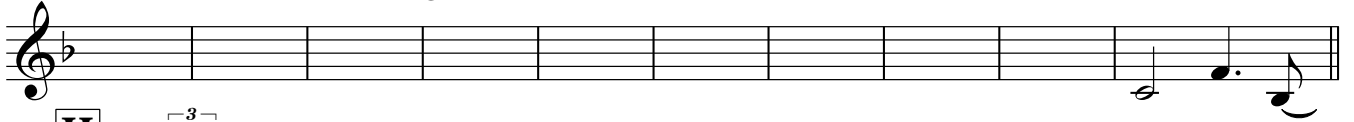
55 Bbm7 Eb7 Abm7 Db7 Gb13

59 G13 Ab13 Am7 D7 Gm7 C7

Piano

G Couplet 3

65 Fmaj7 D7(#9) Gm7 C7 Am7 D7 Gm7 C7 Fmaj7 Cm7 F7



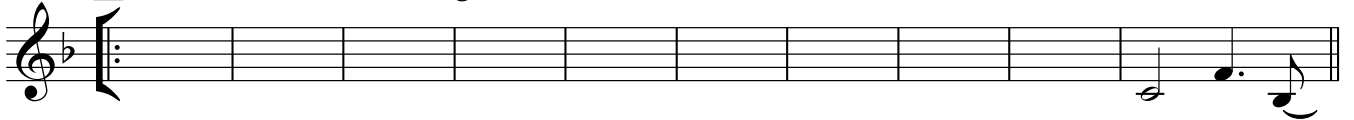
H

75 Bbmaj7 Bbm7 Eb7 Am7 D7 **I** Drum fill..... 4

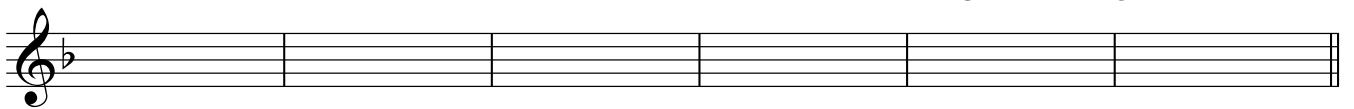


J Chorus

Fmaj7 D7(#9) Gm7 C7 Am7 D7 Gm7 C7 Fmaj7 Cm7 F7



Bbmaj7 Bbm7 Eb7 Am7 D7 Gm7 C7



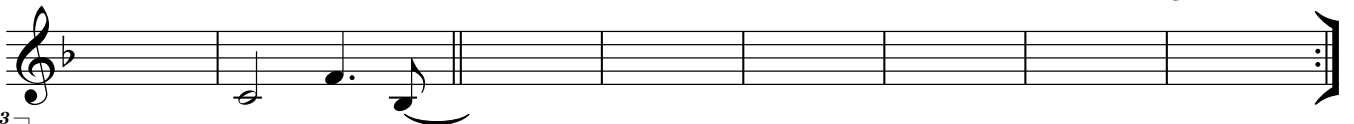
K Backs

Fmaj7 D7(#9) Gm7 C7 Am7 D7 Gm7 C7



1.

Fmaj7 Cm7 F7 Bbmaj7 Bbm7 Eb7 Abmaj7 Abm7 Db7 Gbmaj7 Gm7 C7



2.

Bbmaj7 Bbm7 Eb7 Bm7 E7 Amaj7 Abm7 Db7



L Pont 2

Gb13 G13 Ab13



Bbm7 Eb7 Abm7 Db7 Gb13



G13 Ab13 Am7 D7 Gm7 C7



Piano

M Couplet 4

Fmaj7 D7(#9) Gm7 C7 Am7 D7 Gm7 C7 Fmaj7 Cm7 F7

Musical staff for Couplet 4. The staff is in treble clef with a key signature of one flat (Bb). It contains a series of rests for the first eight measures, followed by a quarter note Bb in the ninth measure, a dotted quarter note Bb in the tenth measure, and a quarter note Bb in the eleventh measure.

N

Bbmaj7 Bbm7 Eb7 Am7 D7

Musical staff for section N. The staff is in treble clef with a key signature of one flat (Bb). It contains a series of rests for the first three measures, followed by a quarter note Bb in the fourth measure, a quarter note Bb in the fifth measure, a quarter note Bb in the sixth measure, a quarter note Bb in the seventh measure, a quarter note Bb in the eighth measure, a quarter note Bb in the ninth measure, and a quarter note Bb in the tenth measure.

C7

3

Musical staff with a triplet. The staff is in treble clef with a key signature of one flat (Bb). It contains a series of rests for the first two measures, followed by a quarter note Bb in the third measure, a quarter note Bb in the fourth measure, a quarter note Bb in the fifth measure, a quarter note Bb in the sixth measure, a quarter note Bb in the seventh measure, and a quarter note Bb in the eighth measure.

O Outro 1

Bbmaj7 Bbm7 Eb7 Am7 D7

Musical staff for Outro 1. The staff is in treble clef with a key signature of one flat (Bb). It contains a series of rests for the first three measures, followed by a quarter note Bb in the fourth measure, a quarter note Bb in the fifth measure, a quarter note Bb in the sixth measure, a quarter note Bb in the seventh measure, a quarter note Bb in the eighth measure, and a quarter note Bb in the ninth measure.

C7

3

Musical staff with a triplet. The staff is in treble clef with a key signature of one flat (Bb). It contains a series of rests for the first two measures, followed by a quarter note Bb in the third measure, a quarter note Bb in the fourth measure, a quarter note Bb in the fifth measure, a quarter note Bb in the sixth measure, a quarter note Bb in the seventh measure, and a quarter note Bb in the eighth measure.

P Outro 2

Bbmaj7 Bbm7 Eb7 Am7 D7 C7 F

Musical staff for Outro 2. The staff is in treble clef with a key signature of one flat (Bb). It contains a series of rests for the first three measures, followed by a quarter note Bb in the fourth measure, a quarter note Bb in the fifth measure, a quarter note Bb in the sixth measure, a quarter note Bb in the seventh measure, a quarter note Bb in the eighth measure, a quarter note Bb in the ninth measure, a quarter note Bb in the tenth measure, a quarter note Bb in the eleventh measure, and a quarter note Bb in the twelfth measure.