

# LAKANSIEL

M. CANNONGE / P. MAN'ALMA

TROMBONE 1

Musical staff for Trombone 1, starting with a boxed letter **A**. The staff contains a sequence of notes and rests in a 3/4 time signature.

Tb 1

Musical staff for Trombone 1, continuing the sequence from the previous staff.

Tb 1

Musical staff for Trombone 1, continuing the sequence with a slur over the final notes.

Tb 1

Musical staff for Trombone 1, starting with a boxed letter **B** and a measure rest of 18. It includes a boxed letter **C** and a slur over the final notes.

Tb 1

Musical staff for Trombone 1, continuing the sequence with a slur over the final notes.

Tb 1

Musical staff for Trombone 1, including a boxed letter **D** and a measure rest of 15.

Tb 1

Musical staff for Trombone 1, continuing the sequence with a slur over the final notes.

Tb 1

Musical staff for Trombone 1, continuing the sequence with a slur over the final notes.

Tb 1

Musical staff for Trombone 1, starting with a boxed letter **E** and the word **SPECIALE**. The staff contains a sequence of notes and rests.

Tb 1

Musical staff for Trombone 1, continuing the sequence with a slur over the final notes.

Tb 1

Musical staff for Trombone 1, continuing the sequence with a slur over the final notes.

Tb 1

Musical staff for Trombone 1, starting with a boxed letter **F** and a measure rest of 15.

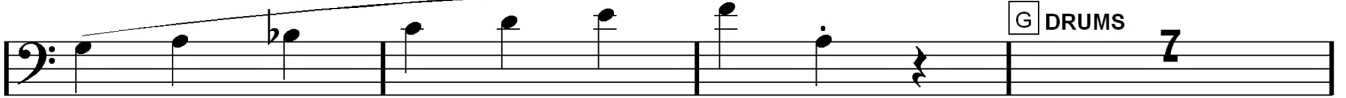
Tb 1

Musical staff for Trombone 1, continuing the sequence with a slur over the final notes.

Tb 1



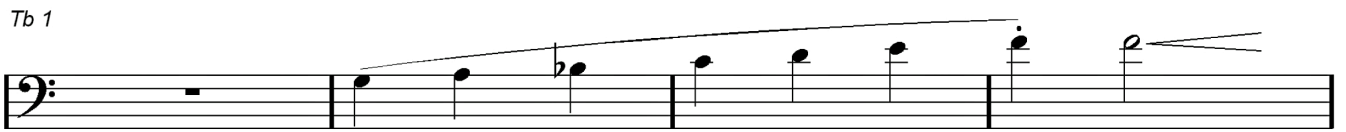
Tb 1



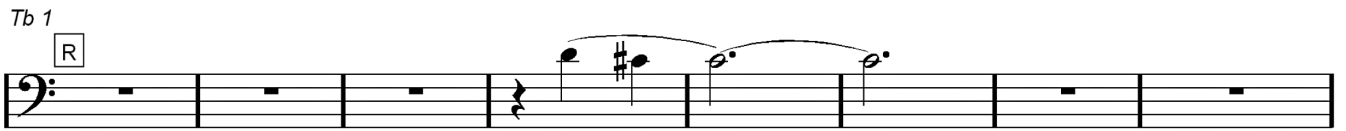
Tb 1



Tb 1



Tb 1



Tb 1



Tb 1

