

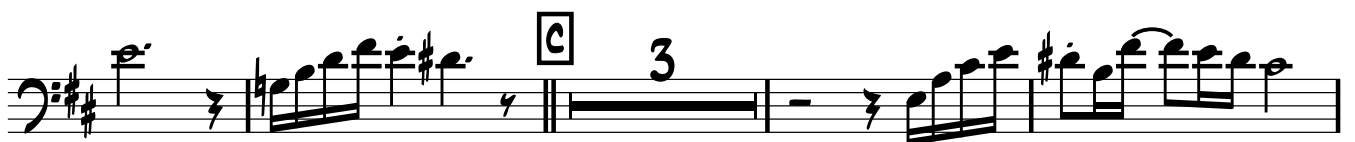
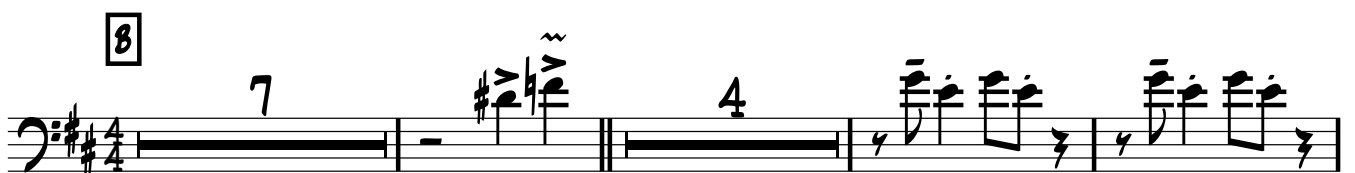
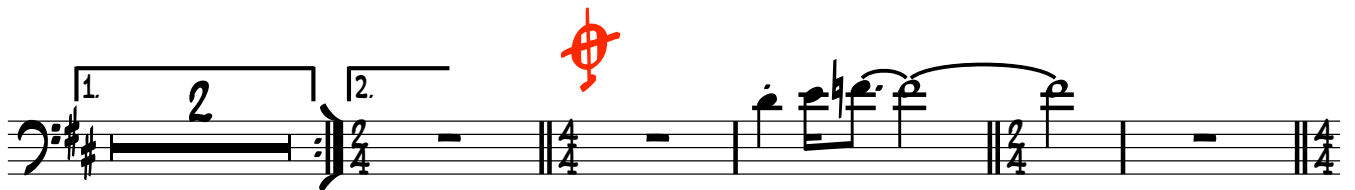
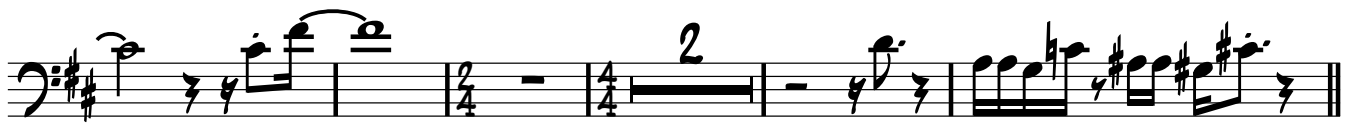
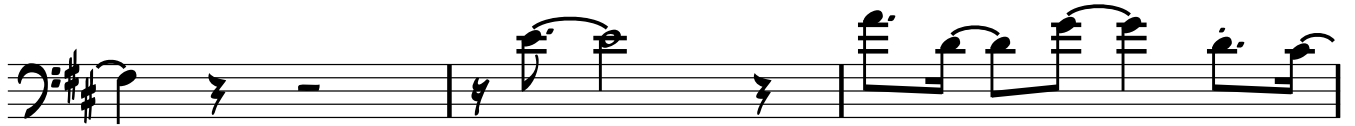
TROMBONE 1

♩ = 96

CHALBABI

ADAPTATION/ARRGTS: A.RAUAUD

J.BERNARD



TROMBONE 1

2

5

Musical staff in bass clef with a key signature of two sharps (F# and C#). A box labeled 'D' is above the staff. A measure rest for 5 measures is indicated by a horizontal line with the number '5' above it.

4

Musical staff in bass clef with a key signature of two sharps. A measure rest for 4 measures is indicated by a horizontal line with the number '4' above it.

E 3

Musical staff in bass clef with a key signature of two sharps. A box labeled 'E' is above the staff. A measure rest for 3 measures is indicated by a horizontal line with the number '3' above it.

Musical staff in bass clef with a key signature of two sharps, containing various notes and rests.

F 3

Musical staff in bass clef with a key signature of two sharps. A box labeled 'F' is above the staff. A measure rest for 3 measures is indicated by a horizontal line with the number '3' above it.

1 2 2. 2/4 4/4

Musical staff in bass clef with a key signature of two sharps. It features first and second endings, with time signature changes to 2/4 and 4/4.

G 7 SOLOS D.S. AL CODA x2

Musical staff in bass clef with a key signature of two sharps. A box labeled 'G' is above the staff. A measure rest for 7 measures is indicated by a horizontal line with the number '7' above it. The word 'SOLOS' is written in blue below the staff. The instruction 'D.S. AL CODA' is written in red below the staff, followed by 'x2' in blue.

Musical staff in bass clef with a key signature of two sharps. It begins with a red cross symbol and a box labeled 'H' above the staff.

Musical staff in bass clef with a key signature of two sharps, containing various notes and rests.

OPEN ENDING RALL. CODA

Musical staff in bass clef with a key signature of two sharps. It includes the instruction 'OPEN' in red, a first ending bracket labeled 'ENDING' in red, the instruction 'RALL.' in red, and a coda symbol labeled 'CODA' in red.