

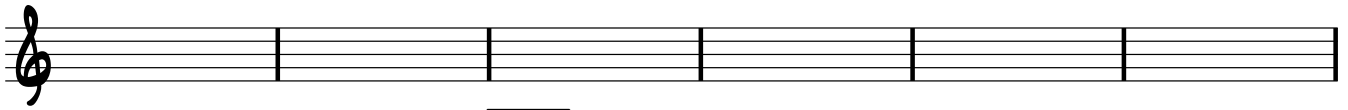
PIANO

INTRO

Am⁷

Am⁷

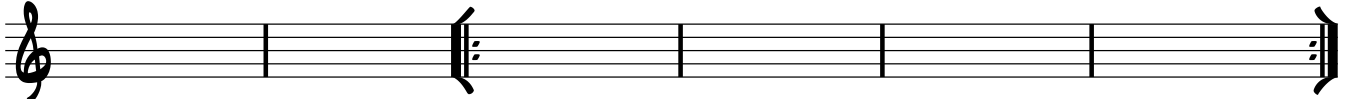
Fmaj⁷



REFRAIN

7 Dm⁷ Dm⁷/C Bm⁷(b5)

Em⁷ Am⁷ Dm⁷ Em⁷ Am⁷ Dm⁷ Em⁷ Am⁷ Dm⁷ Em⁷ Am⁷ Dm⁷



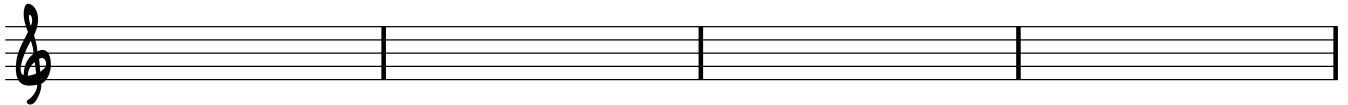
COUPLET

13 Em⁷ Am⁷ Dm⁷ Em⁷

Am⁷ Dm⁷ Em⁷

Am⁷ Dm⁷ Em⁷

Am⁷ Dm⁷

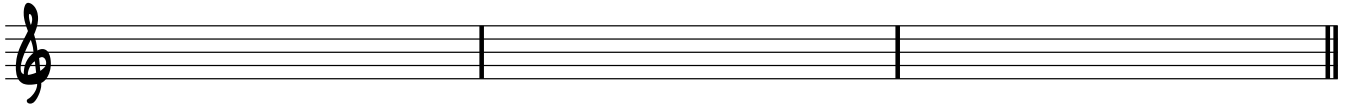


17 Em⁷

Am⁷ Dm⁷ Em⁷

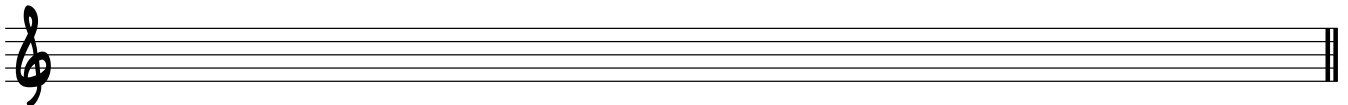
Am⁷ Dm⁷ Em⁷

Am⁷ Dm⁷



TRANSITION

20 E⁷



REFRAIN

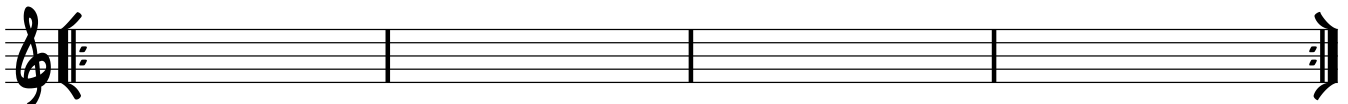
21 4x' Amaj⁷

Amaj⁷

F#m⁷

F#m⁷

D E



INTERLUDE

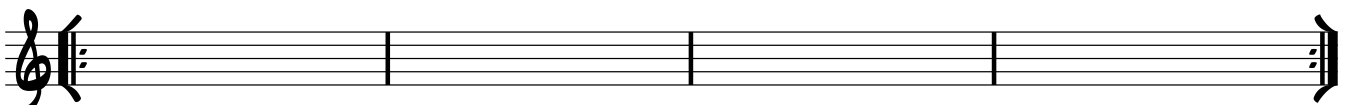
25 Amaj⁷

Amaj⁷

1. F#m⁷

F#m⁷

D E

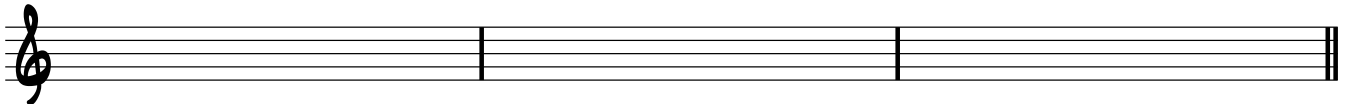


2.

29 F#m⁷

Dmaj⁷

Dm(maj⁷)



INTERLUDE 2

32 A

G

D

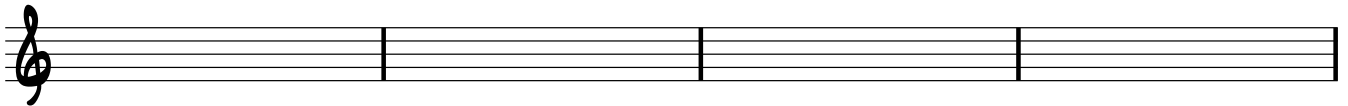
G

A

G

D

G



36 A

G

D

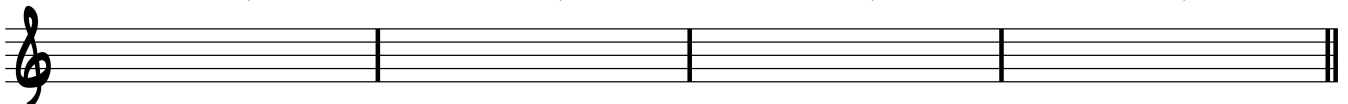
G

A

G

D

G



2

SOLO BASS + REFRAIN

PIANO

40 X3 A G D G A G D G A G D G

46 A G D G A G D G A G

51 D G A G D G A G D G

SOLO GUITARE

56 A G D G A G D G

COUPLET 2

60 A G D G A G D G

INTERLUDE 3

64 A G D G A G D G

REFRAIN ADLIB

CODA

68 A G D G A G D G CODA G