

TP 4

# SIEMPRE CANTA

TONY CHASSEUR

$\text{♩} = 192$

BATT - PERCS

SALSA

First staff of music in 2/4 time, key of Bb. It begins with a rest followed by a series of eighth notes: Bb, A, G, F, E, D, C, Bb. The staff continues with a sequence of eighth notes: Bb, A, G, F, E, D, C, Bb, A, G, F, E, D, C, Bb.

Second staff of music. It starts with a quarter note Bb, followed by eighth notes A, G, F, E, D, C, Bb. A measure with a fermata and a '2' above it follows. The staff continues with eighth notes Bb, A, G, F, E, D, C, Bb, A, G, F, E, D, C, Bb.

Third staff of music. It begins with eighth notes Bb, A, G, F, E, D, C, Bb, A, G, F, E, D, C, Bb. The staff continues with eighth notes Bb, A, G, F, E, D, C, Bb, A, G, F, E, D, C, Bb.

Fourth staff of music. It starts with eighth notes Bb, A, G, F, E, D, C, Bb, A, G, F, E, D, C, Bb. A measure with a fermata and an 'A' in a box above it follows. The staff continues with eighth notes Bb, A, G, F, E, D, C, Bb, A, G, F, E, D, C, Bb.

Fifth staff of music. It begins with a quarter note Bb, followed by eighth notes A, G, F, E, D, C, Bb. A measure with a fermata and a 'B' in a box above it follows. The staff continues with eighth notes Bb, A, G, F, E, D, C, Bb, A, G, F, E, D, C, Bb. A measure with a fermata and a '2' above it follows. The staff continues with eighth notes Bb, A, G, F, E, D, C, Bb, A, G, F, E, D, C, Bb. A measure with a fermata and a '7' above it follows.

Sixth staff of music. It starts with eighth notes Bb, A, G, F, E, D, C, Bb, A, G, F, E, D, C, Bb. The staff continues with eighth notes Bb, A, G, F, E, D, C, Bb, A, G, F, E, D, C, Bb. The key signature changes to C major (no sharps or flats).

Seventh staff of music. It begins with a quarter note Bb, followed by eighth notes A, G, F, E, D, C, Bb. A measure with a fermata and a 'C' in a box above it follows. The staff continues with eighth notes Bb, A, G, F, E, D, C, Bb, A, G, F, E, D, C, Bb. A measure with a fermata and a '2' above it follows.

Eighth staff of music. It starts with eighth notes Bb, A, G, F, E, D, C, Bb, A, G, F, E, D, C, Bb. The staff continues with eighth notes Bb, A, G, F, E, D, C, Bb, A, G, F, E, D, C, Bb. A measure with a fermata and a '6' above it follows. The staff continues with eighth notes Bb, A, G, F, E, D, C, Bb, A, G, F, E, D, C, Bb.

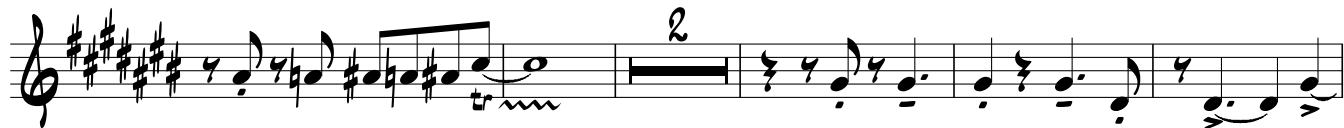
Ninth staff of music. It begins with eighth notes Bb, A, G, F, E, D, C, Bb, A, G, F, E, D, C, Bb. A measure with a fermata and a 'D' in a box above it follows. The staff continues with eighth notes Bb, A, G, F, E, D, C, Bb, A, G, F, E, D, C, Bb. A measure with a fermata and a '4' above it follows. The staff continues with eighth notes Bb, A, G, F, E, D, C, Bb, A, G, F, E, D, C, Bb.

Tenth staff of music. It starts with eighth notes Bb, A, G, F, E, D, C, Bb, A, G, F, E, D, C, Bb. A measure with a fermata and an 'E' in a box above it follows. The staff continues with eighth notes Bb, A, G, F, E, D, C, Bb, A, G, F, E, D, C, Bb. A measure with a fermata and a '5' above it follows. The staff continues with eighth notes Bb, A, G, F, E, D, C, Bb, A, G, F, E, D, C, Bb. A measure with a fermata and a '3' above it follows.

Eleventh staff of music. It begins with eighth notes Bb, A, G, F, E, D, C, Bb, A, G, F, E, D, C, Bb. A measure with a fermata and an 'F' in a box above it follows. The staff continues with eighth notes Bb, A, G, F, E, D, C, Bb, A, G, F, E, D, C, Bb. A measure with a fermata and a '7' above it follows. The staff continues with eighth notes Bb, A, G, F, E, D, C, Bb, A, G, F, E, D, C, Bb. A measure with a fermata and a '2' above it follows.



G



H



I



J



