

TB 3

SIEMPRE CANTA

TONY CHASSEUR

$\text{♩} = 192$

BATT - PERCS

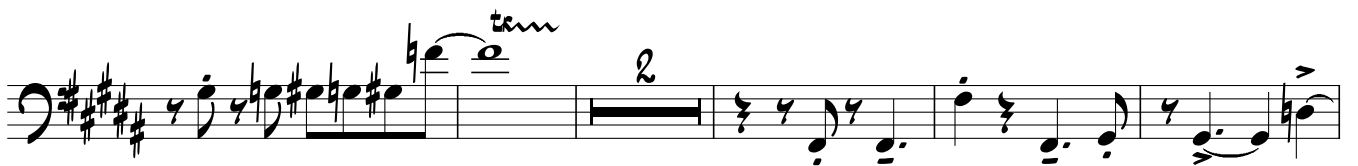
SALSA

A

B

C

D



Trills and triplets in the first staff.

Staff 2 with first and second endings.

Staff 3 with a slur and a flat.

Staff 4 with a first ending and a second ending.

Staff 5 with a key signature change.

Staff 6 with an eighth note triplet.

Staff 7 with a slur and a flat.

Staff 8 with a key signature change.

Staff 9 with a slur and a flat.