

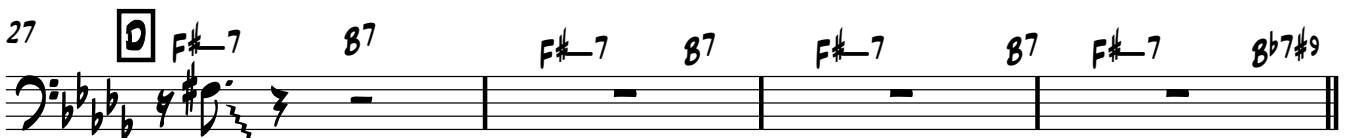
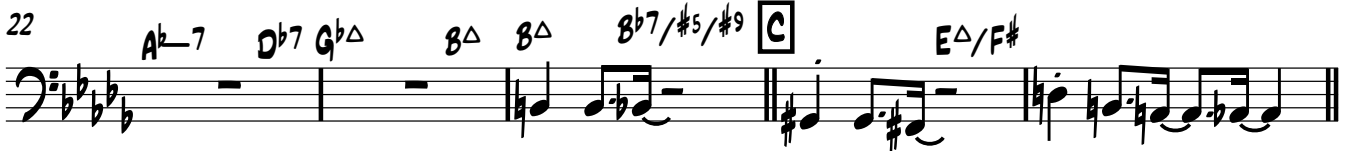
BIDJIN KO

BASSE ÉLECTRIQUE

T. VATON/T. CHASSEUR

ARRGT: CHRISTIAN MARTINEZ

♩ = 104



31 $A^{\flat 11}$ $G^{\flat 11}$ $G^{\flat 7}$ $A^{\flat}(SUS^4)$ $D^{\flat 11}$

36 **E**

40 $E^{\flat 7/9}$

43 $E^{\Delta 9}$ $E^{\flat 7/9}$ $E^{\Delta 9}$ 2 6 FOIS

48 **F**

53

58

62

66 SOLO TR81 $E^{\flat 7}$ C° F° $E7/\#4$ $E^{\flat 7}$ C° F° $E7/\#4$ $\$$

72 $E^{\Delta}/F^{\#}$ **G** $F^{\# 7}$ B7 6 FOIS 3

76 $F^{\# 7}$ B7 $F^{\# 7}$ B7 $F^{\# 7}$ B7